

Module 7 L02

Fibrous Joint

Dr. Lisa Brinn

lbrinn@fiu.edu

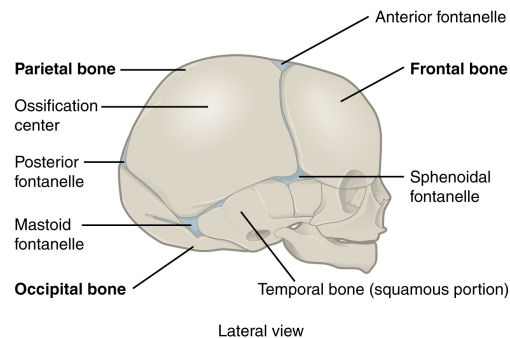
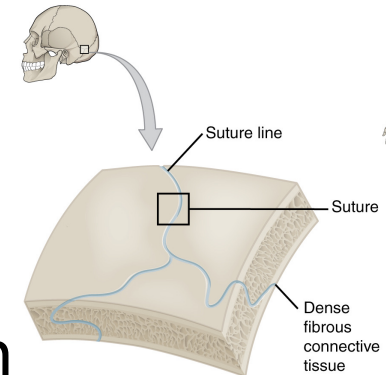
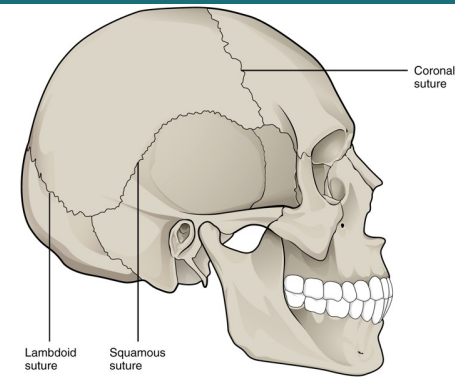
[Video Recording Link](#)

2. Fibrous Joints

- Joint in which neighboring bones are joined together by a solid mass of dense irregular connective tissue
 - Connective tissue:
 - small fibrous strands of connective tissue, or
 - large thick bands, or
 - extensive membranous sheets.
- Examples include:
 - A. Sutures
 - B. Syndesmoses
 - C. Interosseous membranes

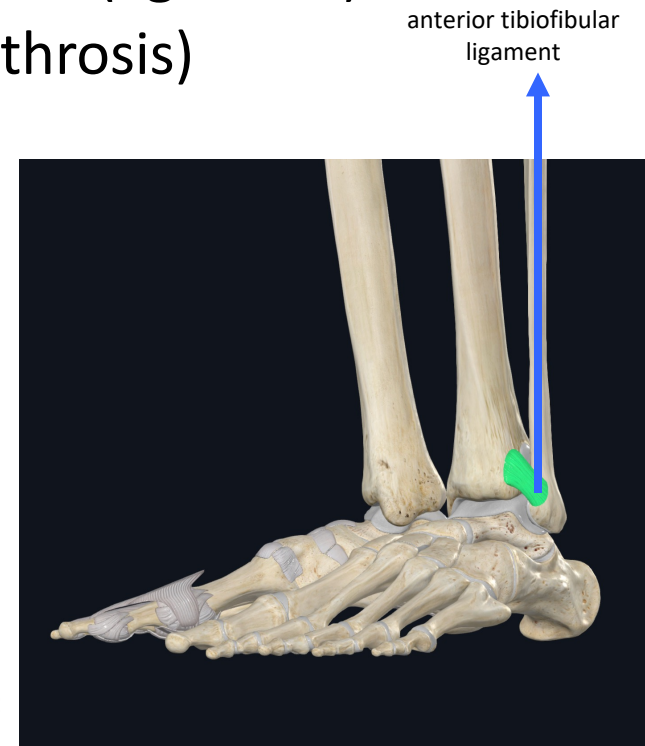
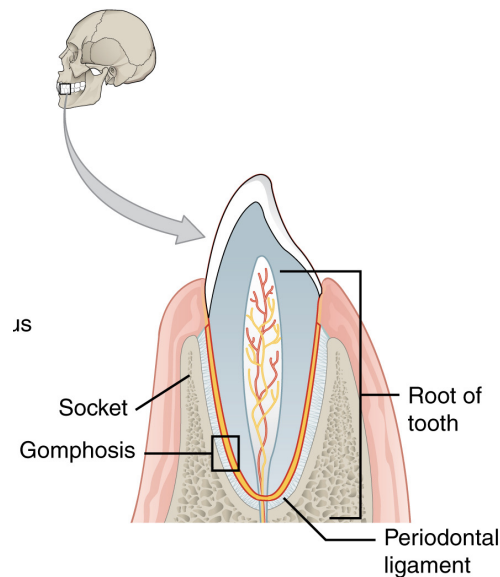
A. Sutures

- Thin dense irregular connective tissue
 - sutural ligament
- Irregular, interlocking edges give them:
 - Added strength
 - Decrease chance of fracturing
- Immovable (Synarthrosis) = adults
- Slightly movable (Amphiarthrosis) = children
- Function
 - Sites of growth
 - Shock absorption



B. Syndesmoses

- Greater distance between the articulating surfaces
- More dense irregular connective tissue than suture
 - Connective tissue arranged as a bundle (ligament)
 - Permits limited movement (Amphiarthrosis)
- Examples:
 - Tibiofibular joint
 - Gomphosis



C. Interosseous Membrane

- Substantial sheet of dense irregular connective tissue
- Binds neighboring long bones
- Permits slight movement (Amphiarthrosis)
- Examples:
 - Between radius and ulna
 - Between tibia and fibula
- Functions:
 - Help hold adjacent long bones together
 - Important role in defining range of motion
 - Increased attachment surface for muscles

